

# Ablution Trough - Pattern No.1



The Pattern no.1 Trough is a low cost wall mounted trough for use in workshops and industrial washrooms. It is a wall-mounted trough and is used with wall-taps mounted on a tiled wall above the trough.

Veitch stainless steel troughs are sold throughout Australia exclusively through the building & plumbing merchants.

## Technical Data

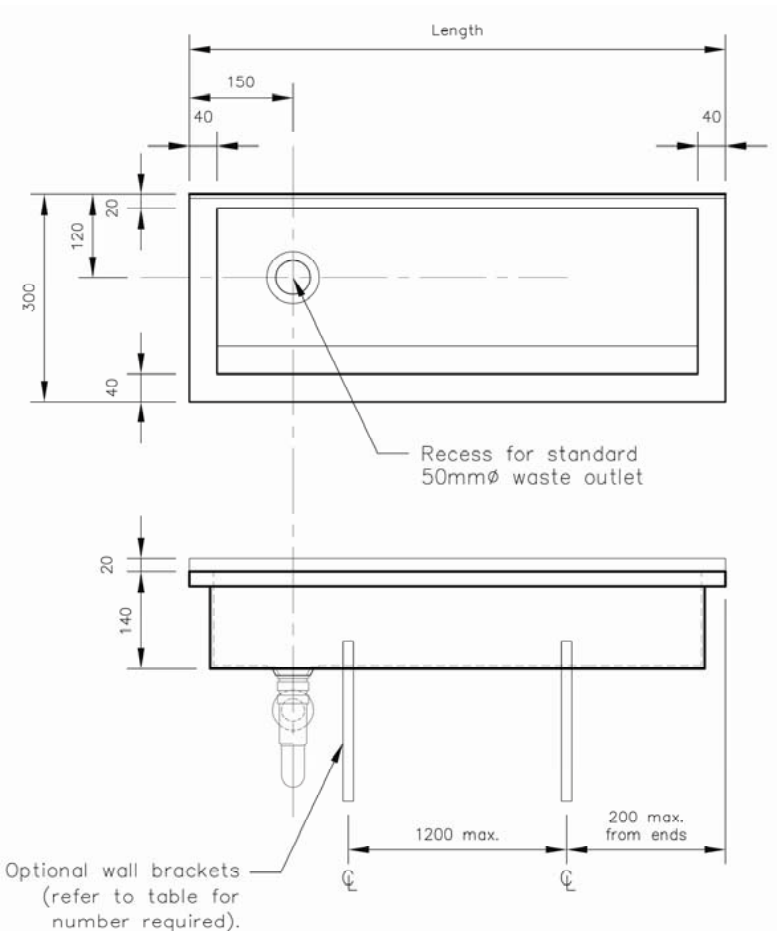
<b>Product</b>	Ablution Trough - Pattern No1	
<b>Material</b>	Gr304 Stainless Steel	
<b>Material Thickness</b>	1.2mm	
<b>Material Surface Finish</b>	Satin Finished	
<b>Type of mounting</b>	Wall mounted on Brackets (mild steel)	Product Code: 02-1505
<b>Bowl Corners</b>	Square	
<b>External Corners</b>	Square	
<b>Overall length</b>	from 900 to 3600mm	
<b>Overall Width</b>	300mm	
<b>Overall Depth</b>	140mm	
<b>Outlet Size</b>	DN50 (50 BSP)	
<b>Outlet Position</b>	Left or Right hand only	
<b>Front and End Facias</b>	25mm	
<b>Rear</b>	20mm tile upstand	
<b>Tap Holes</b>	Not available	
<b>Options</b>	20mm tile upstand to either or both ends	
	Stainless Steel Wall Brackets	Product Code: 02-1550
	Insert model available	

The information in this sheet reflects the current technical specifications at the time of publication. As part of our continuous improvement program, we reserve the right to change the technical or physical specifications without notice.

# Ablution Trough - Pattern No.1



- Economical wall mounted trough
- Suitable for use with wall mounted tapware
- No upstands
- Suited to use in workshops and industrial washrooms
- custom versions can be made to suit specific applications



<b>Brackets</b>	
<i>Available in Stainless Steel or Mild Steel</i>	
<b>Length of trough</b>	<b>Qty required</b>
<i>Up to 1600mm</i>	<i>2</i>
<i>1601 – 2800mm</i>	<i>3</i>
<i>2801 – 3600mm</i>	<i>4</i>

<b>Tap hole set out</b>	
<i>Recommended only</i>	
<b>Usage</b>	<b>Spacing</b>
<i>Adults</i>	<i>600mm</i>
<i>Children</i>	<i>450mm</i>